

Commercial Customer Synopsis

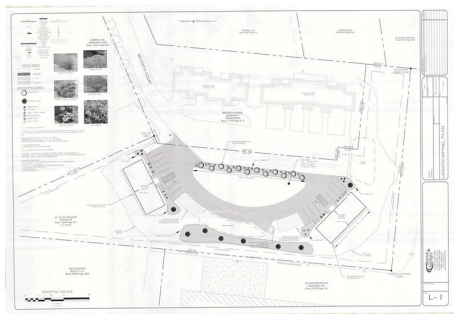
0 Off Beckwith Court, Ellsworth, Maine 04605

MLS#: 1291056
Status: Active

Nbrhd/Assoc:
County: Hancock

Assoc. Fee:
Entrance Fee:

List Price: \$160,000
Original Price: \$160,000



General Information

Class: General Commercial
Surveyed: Yes
Style: Seasonal:
#Units: Year Built:
#Floors: Ceil Ht +/-:
Max Floor Cap: Leases:
Annual Income: Traffic Cnt:
Annual Expenses: FP Ttl: 0

Retail SF +/-:
Manufacturing SF +/-:
Office SF +/-:
Warehouse SF +/-:
GLAAG:
Leased Land: No
Lot Size +/-: 2.32 acres
Source of Lot Size: Public Record
Road Frontage +/-:
Zoning: Commercial

Water Information

Waterfront:
Wtr Frontage Amt +/-:
Waterfront Owned +/-:
Waterfront Shared +/-:
Water Body:
Water Views: No

Tax/Deed/Community Information

Book/Page/Deed: 6517/140/All
Map/Block/Lot: 016/047/003
Full Tax Amt/Yr: \$1,397/16-17
School District:
Confidentiality Statemnt: No

Usage

Primary Use: Multi Unit
Property Features

Site:
Driveway:
Parking:
Location: Intown, Near Shopping
Restrictions:
Rec. Water:
Roads: Association
Transportation: Major Road Access
Electric: On Site
Gas:
Waste Wtr Disp: Public
Water: Public
Equipment:
Basement Entry:

Construction:
Basement Info:
Foundation Mtrls:
Exterior:
Roof:
Heat System:
Heat Fuel:
Water Heater:
Cooling:
Floors:
Veh. Storage:
Amenities:
Access. Amenities:
View:

Remarks: 1. Complete plans with engineering and environmental study available. 2. Project was once approved by planning board and will need updated approvals. 3. Prior approval is for 8 units of 1,450 square feet each. 4. Electrical, sewer, and water installed to building site. 5. Beautiful and Private site 6. Will build to suit

Listing/Agent/Office Information

Pending Date: List Date: 12/13/16 Termination Date: Withdrawn Date:
List Office: Acadia Cornerstone Real Estate, LLC



Prepared By: Wil Gaines. Generated on 05/17/2017 9:00:10 AM



The information on MLS listings has been assembled from various sources of varying degrees of reliability. Any information that is critical to your buying decision should be independently verified.
All dimensions are approximate and not guaranteed. Copyright MREIS, Inc. © 2017